

Q-Compliance

IT RISK MANAGEMENT THAT ENABLES SECURITY

RMF based continuous monitoring of all controls

Dashboards for executives, system owners, and auditors including all 4 classes of evidence for audits

Bridge compliance and security gaps to improve enterprise security

Measure once, report many: RMF (NIST/CNSS), CSF, CDM, ISCM, HIPAA, DFAR CUI 171, FedRamp CJIS, FISMA

Advantages

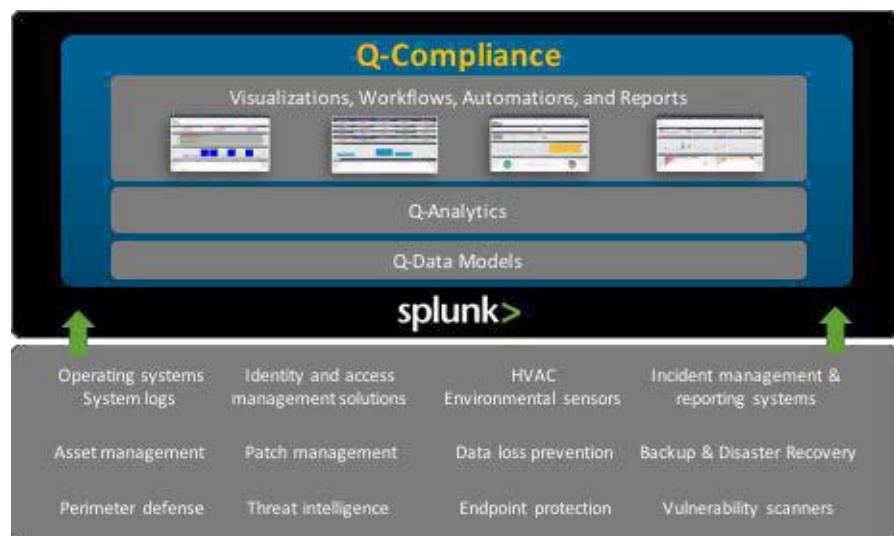
- ✓ Reduces manual efforts & costs
- ✓ Increases frequency of monitoring
- ✓ Establishes real-time control monitoring
- ✓ Improves security and risk



Q-Compliance: IT Risk Management with real time continuous monitoring of security controls on a big data platform

Maintaining and demonstrating compliance with multiple regulatory regimes is often implemented by manually collecting evidence of human activity, business processes, policies, and snapshots of some limited technical data such as vulnerability scans and configurations on a quarterly or even annual basis. But with a dynamic and evolving enterprise, one's security posture and risks change on an hourly basis, creating a chasm between the actual and perceived security, risk, and compliance postures.

Q-Compliance solves this problem by approaching the solution from a security and risk measurement perspective, applying a compliance lens into near real-time data from across your enterprise, and delivering it as a native Splunk Powered App.



Use risk and compliance visibility to improve security

By leveraging machine data, coupled with automated assessment and dynamic alerting capabilities, Q-Compliance provides immediate feedback on control effectiveness and drives risk decision and risk reduction actions on a near real-time basis, with dynamic dashboards for both executives and operational security, risk, and compliance staff.

Q-Compliance

IT RISK MANAGEMENT THAT ENABLES SECURITY

All machine data provides risk visibility for security and IT compliance

Traditional legacy approaches to IT compliance often focus on static repositories for snapshots of evidence and workflows for a limited set of technical controls. As the digital enterprise has evolved, and the number and complexity of threats have increased, the need for real-time monitoring of all technical controls, informed by numerous disparate data sources from across the infrastructure, has become critical to informing risk based decisions and securing Enterprise mission critical systems.

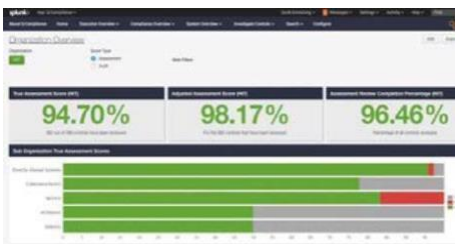


Breakthrough solution for IT control assessment and continuous monitoring

Q-Compliance's unique Splunk-based architecture enables real time monitoring and alerting of potential security and compliance issues, providing true insight into your risk posture, enterprise wide, by system, and by organization. Given the wide and varied nature of security controls employed, only a solution built on a big data platform can scale, accommodate variability, and provide the visibility required to stay compliant and thwart today's threats.

When combined with all four classes of evidence for organizational, management, and technical controls, one can enable true security – one based on risk at the enterprise, system, and asset levels. With out-of-the-box control mappings from authoritative sources, and the ability to create custom overlays for other enterprise requirements, the ability to address numerous compliance mandates and audits is streamlined.

Executive View



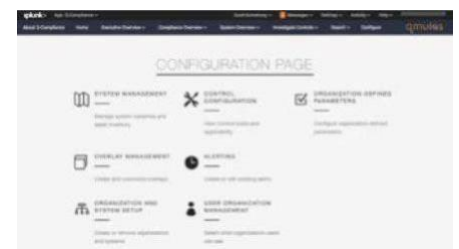
- Compliance and risk postures
- Organization & system views
- View status across different compliance frameworks

Control Monitoring



- Realtime risk and compliance visibility
- Single pane of glass for all evidence and artifacts
- Workflows for time- and event-based assessments

Native RMF Features



- Support for all RMF steps
- Overlay management
- Organization, system, and asset management
- Control tailoring
- Assessment automation